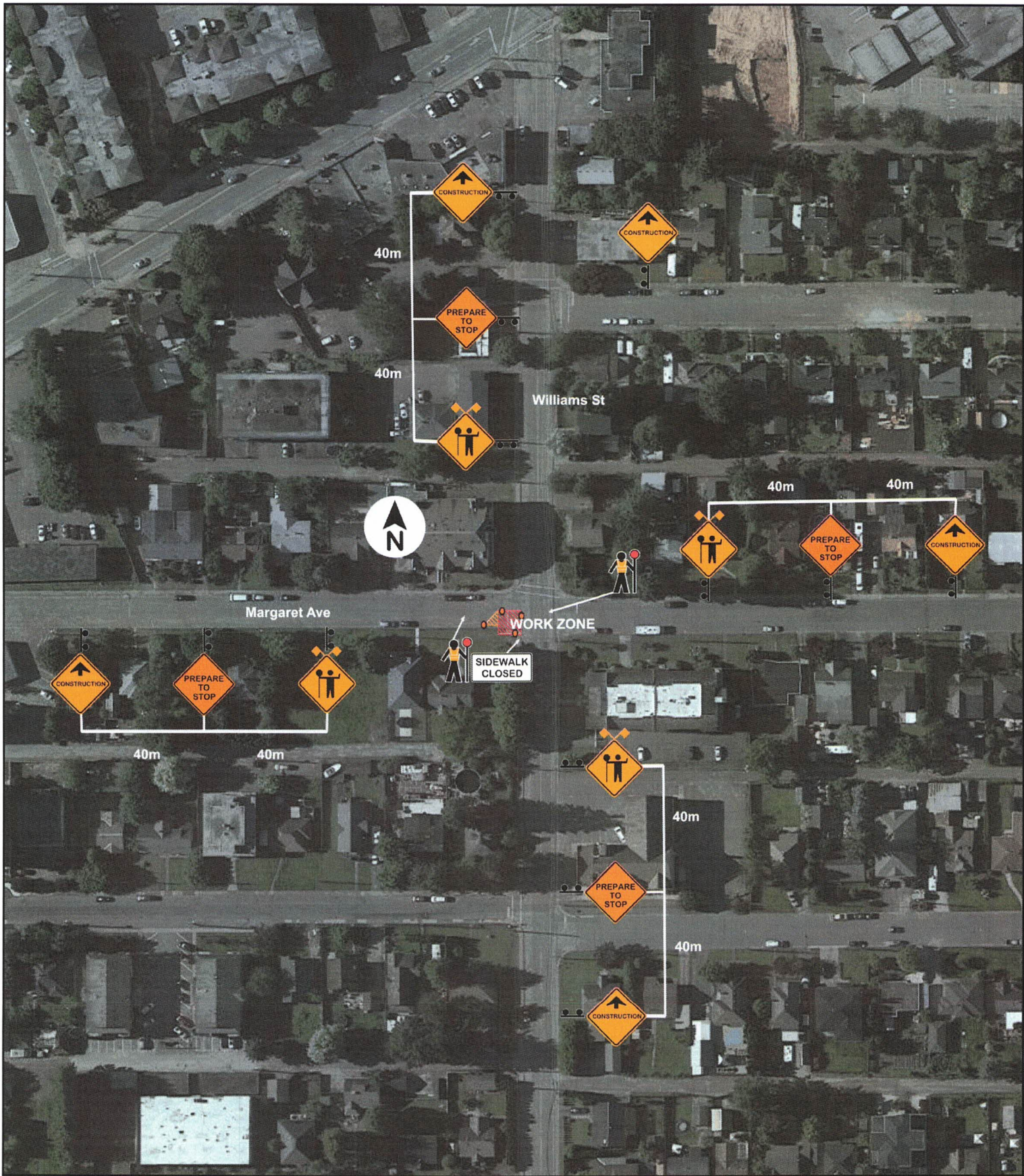
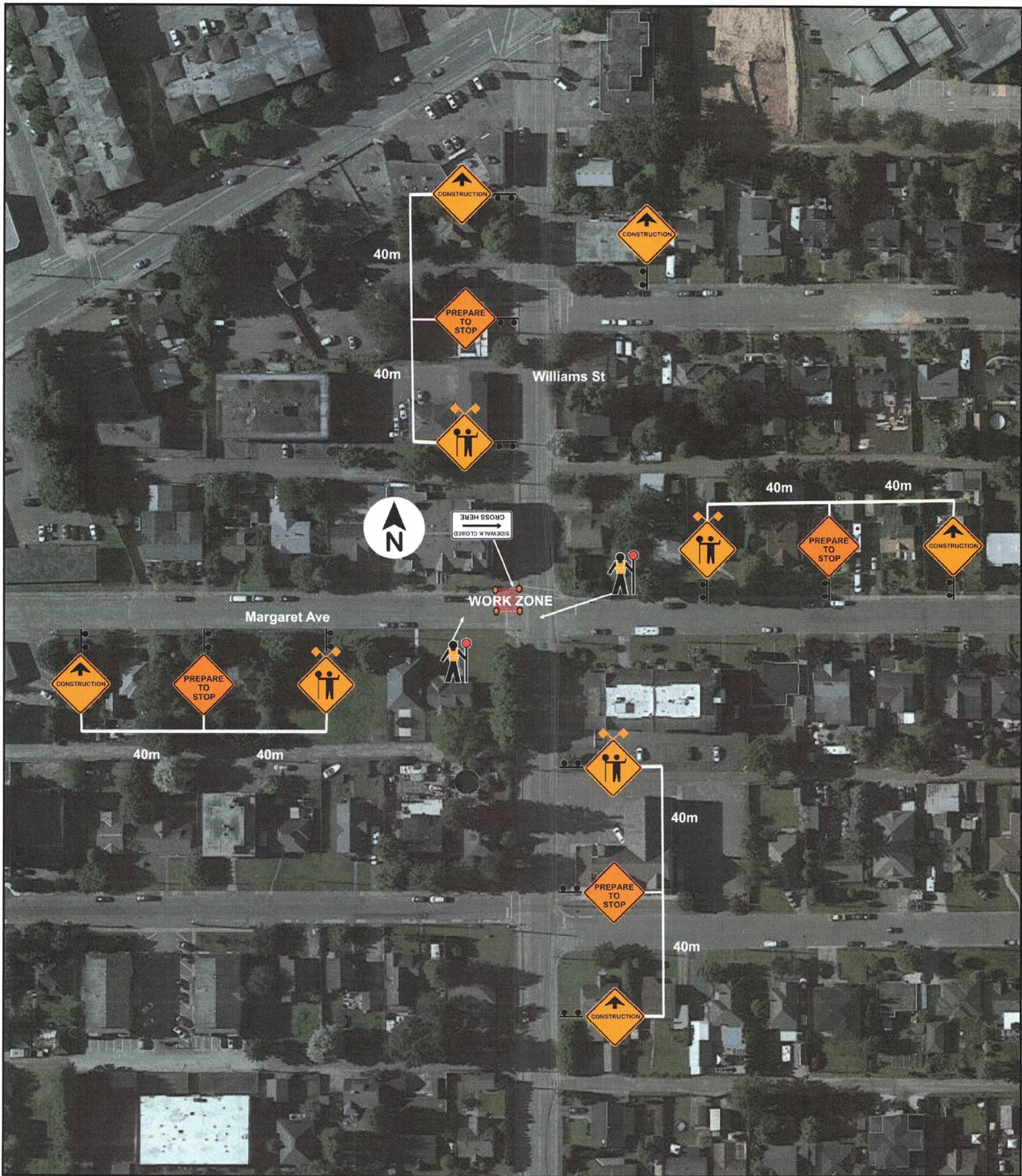


# TMP 23 - City of Chilliwack Street Lighting 2020: Margaret Ave @ Williams St Eastbound



**Figure 11.2: Intersection Lane Closure - Two-Lane, Two-Way Roadway with TCPs (Near Side)  
- Short and Long Duration  
TCPs on site to assist with vehicles, pedestrians, bicyclists and all others**

# TMP 24 - City of Chilliwack Street Lighting 2020: Margaret Ave @ Williams St Westbound



**Figure 11.4: Intersection Lane Closure - Two-Lane, Two-Way Roadway with TCPs (Far Side) - Short and Long Duration**  
TCPs on site to assist with vehicles, pedestrians, bicyclists and all others